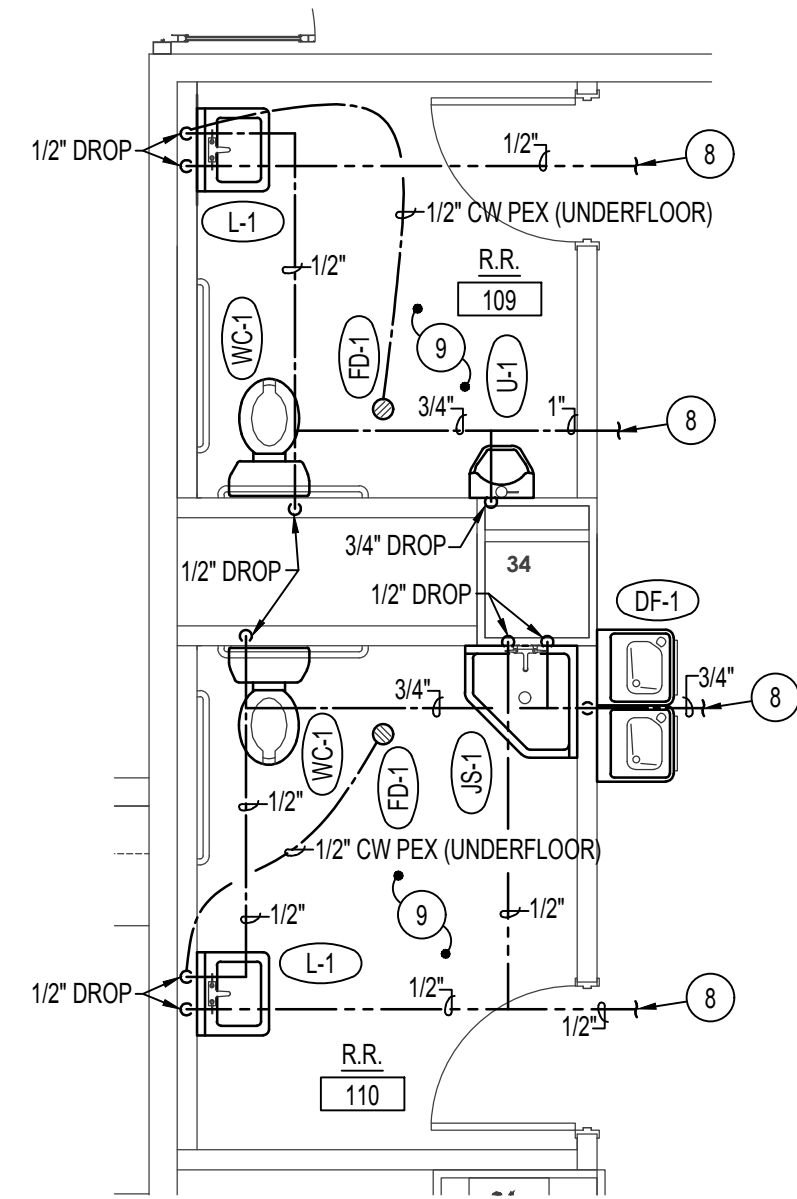
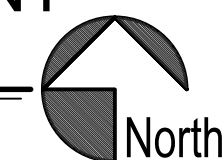


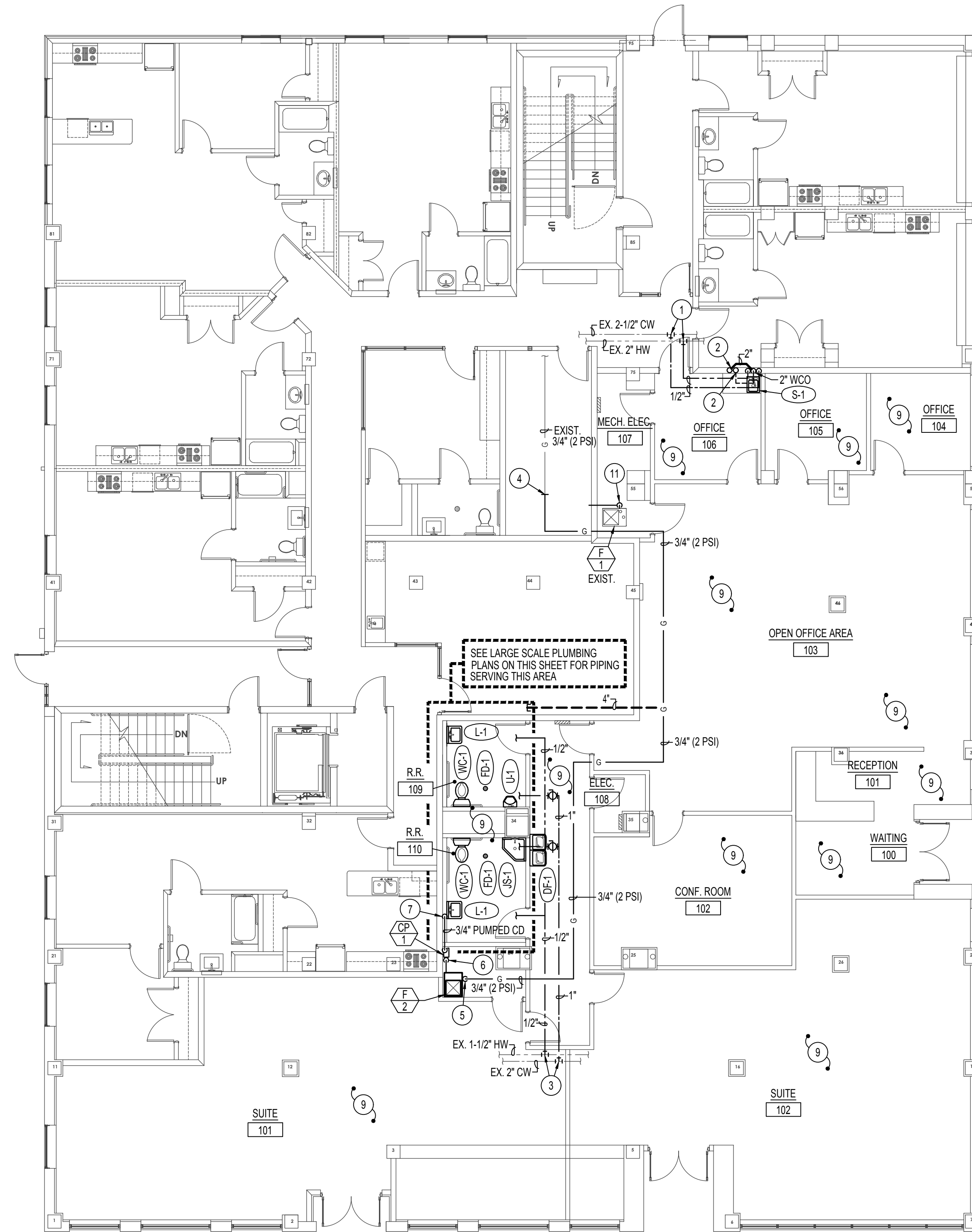
LARGE SCALE WASTE & VENT PIPING FLOOR PLAN

SCALE: 1/4" = 1'-0"



LARGE SCALE WATER PIPING FLOOR PLAN

SCALE: 1/4" = 1'-0"



1st FLOOR PLUMBING PLAN

SCALE: 1/8" = 1'-0"

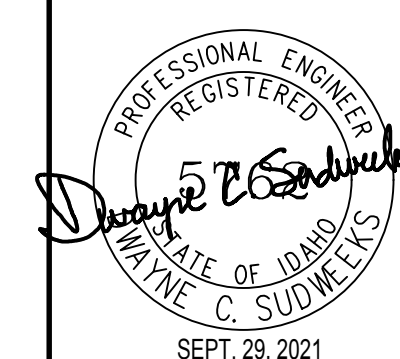


PLAN NOTES:

- 1 CONNECT NEW 1/2" CW & 1/2" HW PIPING TO EXISTING CW AND HW PIPING. FIELD VERIFY EXACT LOCATION OF EXISTING PIPING.
- 2 CONNECT NEW 2" WASTE & 2" VENT FROM SINK TO EXISTING 4" WASTE & VENT STACKS LOCATED IN WALL. FIELD VERIFY EXACT LOCATION OF EXISTING PIPING.
- 3 CONNECT NEW 1" CW AND 1/2" HW TO EXISTING CW & HW PIPING ABOVE CEILING. FIELD VERIFY EXACT LOCATION OF EXISTING PIPING.
- 4 CONNECT NEW 3/4" (2 PSI) GAS LINE TO EXISTING 3/4" (2 PSI) GAS LINE STUBBED INTO ROOM. FIELD VERIFY EXACT LOCATION OF EXISTING PIPING.
- 5 DROP 3/4" (2 PSI) GAS LINE DOWN FROM CEILING SPACE TO FURNACE F-1 AND CONNECT. INSTALL 2 PSI TO OZ. REGULATOR ON GAS LINE SIZED FOR ACTUAL BTU LOAD OF FURNACE PROVIDED. VENT REGULATOR TO THE EXTERIOR. SEE DETAIL ON SHEET P200.
- 6 RUN 3/4" CONDENSATE DRAIN FROM FURNACE TO CONDENSATE PUMP LOCATED ON FLOOR AND CONNECT.
- 7 RUN 3/4" PUMPED CONDENSATE DRAIN LINE LATERALLY IN STUD SPACE OF WALL TO BEHIND LAVATORY LOCATION. INSTALL DISHWASHER CONNECTION OF SINK SIDE OF P-TRAP AND CONNECT TO PUMPED CONDENSATE DRAIN LINE.
- 8 SEE PLUMBING FLOOR PLAN ON THIS SHEET FOR CONTINUATION OF PIPING.
- 9 RELOCATE EXISTING FIRE SPRINKLER HEADS FOR REMODELED AREAS AS PER NFPA 13 CODE REQUIREMENTS.
- 10 CONNECT NEW 2" VENT PIPING TO EXISTING 3" V. LINE IN WALL. FIELD VERIFY LOCATION OF EXISTING PIPING.
- 11 CONNECT NEW 3/4" CONDENSATE DRAIN LINE FROM EXISTING DX COOLING COIL ON FURNACE F-1 TO EXISTING CONDENSATE DRAIN LINE FROM FURNACE.

PLUMBING LEGEND

SYMBOL	DESCRIPTION
V	VENT
VTR	VENT THRU ROOF
CO	CLEANOUT
WCO	WALL CLEANOUT
COTG	CLEANOUT TO GRADE
—	PIPE DROP
—	PIPE RISE
—	BALL TYPE ISOLATION VALVE
—	SOIL OR WASTE PIPING
—	VENT LINE PIPING
—	HARD COLD WATER PIPING
—	DOMESTIC HOT WATER PIPING
—	DOMESTIC HW RECIRC. PIPING
—	CONDENSATE DRAIN LINE
—	NATURAL GAS PIPING



Engineered Systems Associates
 1355 EAST CENTER
 POCATELLO, IDAHO 83201
 PHONE: (208) 233-0501
 FAX: (208) 233-0529
 EMAIL: esa@engsystems.com
 ESA JOB NUMBER: 21068

DRAWN BY: SR
 CHECKED BY: DCS
 JOB NUMBER: 16421
 PROJECT DATE: SEPT. 2021
 SHEET OF
P100

Myers ■ Anderson

■ Architecture
 ■ Interior Design
 ■ Landscape Architecture
 101 North Main Street ■ Pocatello, Idaho 83204 ■ Tel. (208) 232-3741 ■ Fax (208) 232-3782
 849 Front Street, Suite 202 ■ Evanston, Wyoming 82930 ■ Tel. (307) 789-0984

PROJECT: **BONNEVILLE HOTEL DEVELOPMENT**
 SHEET TITLE: **IDAHO FALLS, IDAHO**
 PLUMBING FLOOR PLAN

CONTRACTOR SHALL VERIFY ALL DIMENSIONS & CONDITIONS SHOWN OR IMPLIED.
 DRAWING SCALE APPLIES TO 22" X 34" SHEET SIZE

REVISION DATE